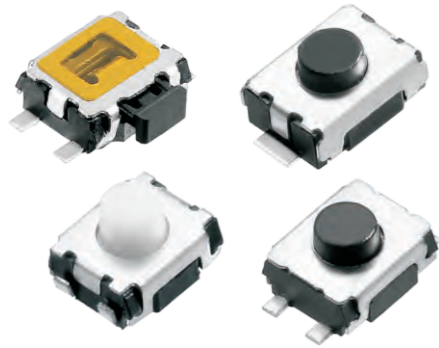


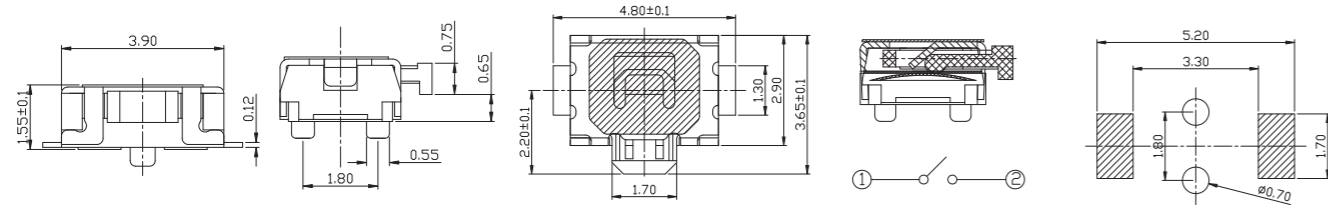
HORIZONTAL PUSH TACTILE SWITCHES



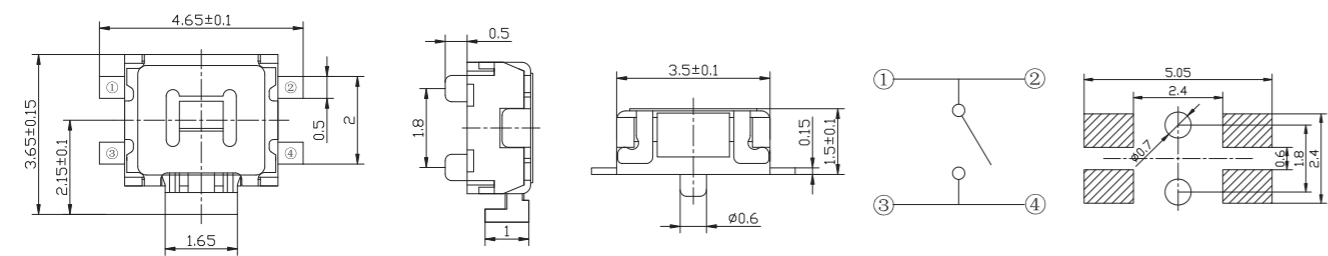
SPECIFICATIONS

RATING: 12VDC 50mA
TRAVEL: 0.13mm
LIFE: 100,000~ 300,000cycles
OPERATING FORCE: A=180gf B=260gf
CONTACT RESISTANCE: 100mΩ MAX INITIAL
INSULATION RESISTANCE: 100MΩ min. 100VDC
DIELECTRIC STRENGTH: 250VAC(50/60Hz) FOR 1MIN
OPERATING TEMPERATURE: -30°C~85°C

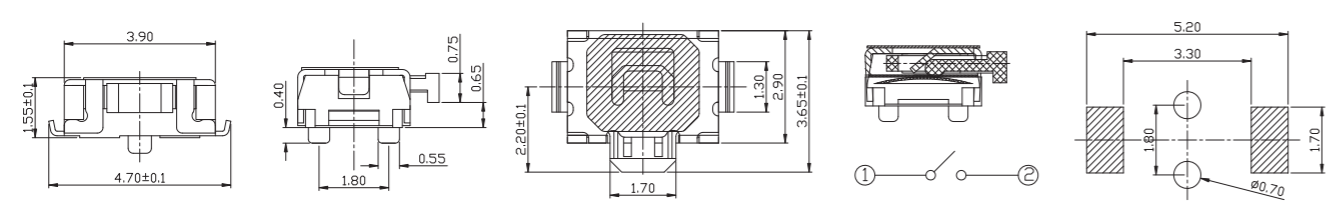
RTPA-A/B-V



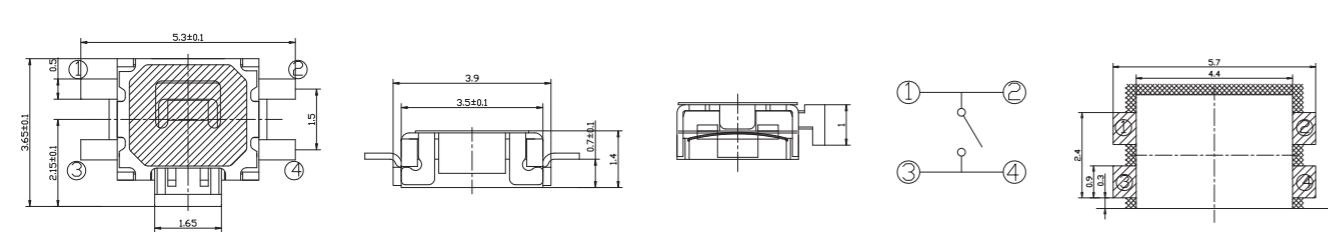
RTPB-A/B-V



RTPU-A/B-V

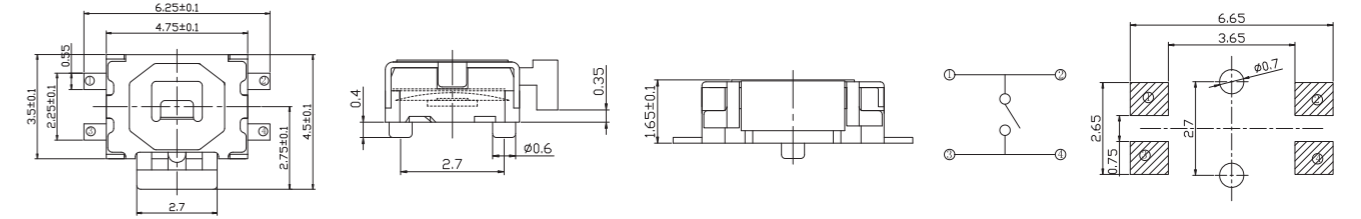


RTPS-A/B-V

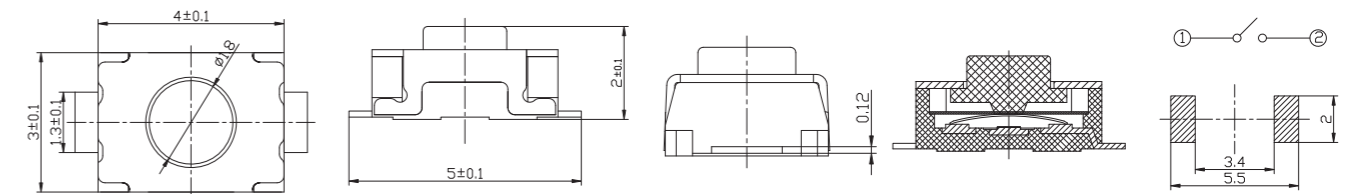


HORIZONTAL PUSH TACTILE SWITCHES

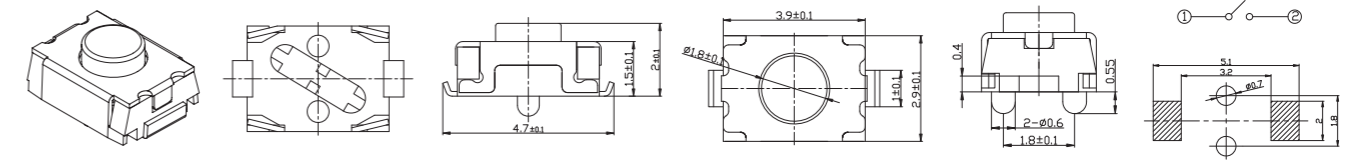
RTPF-A/B-V



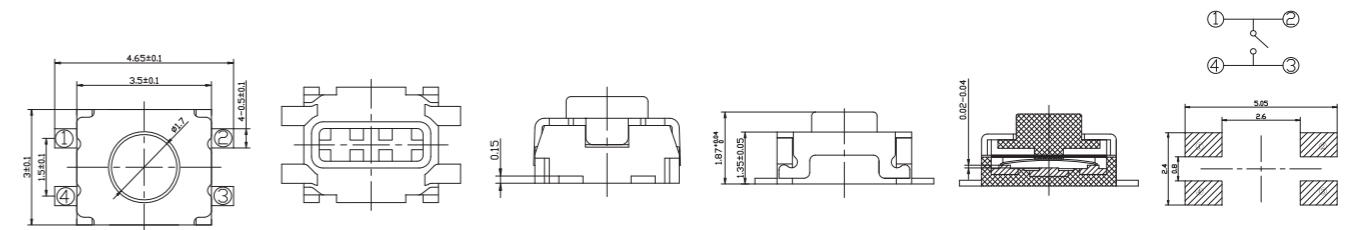
RTPML-A/B-V



RTPMP-A/B-V



RTPMN-A/B-V



RTPMU-A/B-V

